



# 51.2V STACKABLE BATTERY

- The 51.2V 100Ah stacked battery pack is made of lithium iron phosphate cells.
- 4 load-bearing rollers are equipped, which are convenient to move.
- Easy to use and move, plug and play, minimize installation time and cost.
- The modular design enables users to select the energy flexibly, providing...



## CCS NEW

CCS integrates 1-2 FPCs (Insulating film, conductor, adhesive), copper and aluminum bars and other structural parts. It has outstanding advantages in terms of safety, light weight, and regular layout due to its insulation and high integration, ultra-thin thickness, and ultra-softness.

## BMS

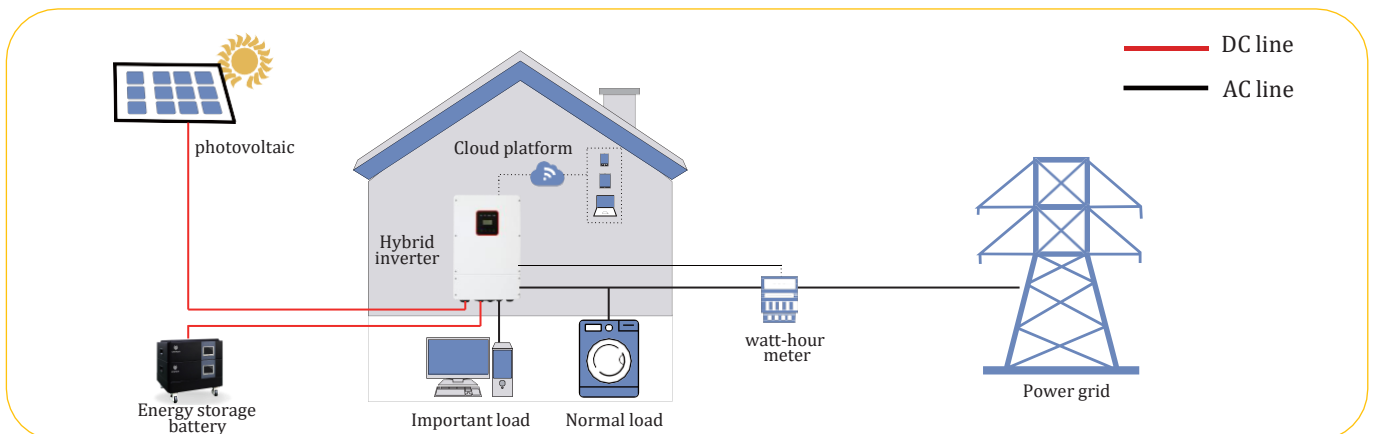
Lithium batteries manufactured by Wirentech are optimized by its battery BMS, through monitoring cells, to provide protection against overcharge, over discharge, short circuit. The BMS helps to ensure safe and accurate operation.

## LCD NEW

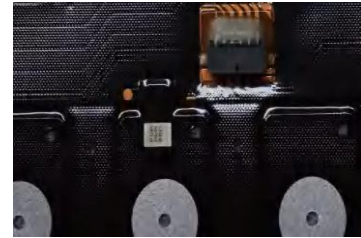
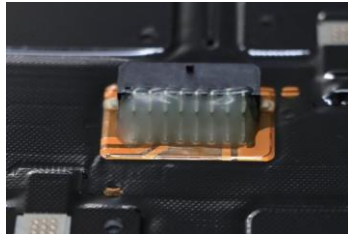
Touchable LCD allows you to view and select inverter brands, the default inverter is Megarevo and optional inverters include Victron, Growatts, SMA, Schneider and Sol-Ark(Deye).

## Fire-Arrestor NEW

Fire-arrestor is a fire extinguisher that is specially designed for put out lithium battery fire or flames, it is a double home protection to prevent from any fire accidents.



CCS integrates 1-2 FPCs(Insulating film, Conductor, Adhesive), copper and aluminum bars and other structural parts. It has outstanding advantages in terms of safety, light weight, and regular layout due to its insulation and high integration, ultra-thin thickness and ultra-softness.



Heavy Duty Busbar, which expands the contact area between copper bar and module, adopts the technique of high-temperature chemical nickel plating. It performs well in electrical and thermal conductivity, corrosion resistance and low internal resistance and ensures stable performance, large space and simple repair.



Touchable LCD(Optional)

Technical specification	WT5100S
Operation Voltage	44.8V~ 57.5V
Dimensions	17.4" x 19" x 8.66"
Weight	51KG
Warranty	10 Years
LiFe Time	15 Years @ 68°F
Cycle life	6000+
Energy	51.2V 100Ah (5.12KWh)
Max. Charge Voltage	57.6V
Max. Charge Current	50A (2.56KW) @77°F
Max. Discharge Current	100A (5.12KW) @77°F
Energy Scalable	Max. 32 units in parallel
Enclose Protection Rate	IP22
Communication	RS232/RS485→ PC software CAN/RS485 → Inverters
Storage	Recommended stored at above 50% SOC, test @ 90 Days, recharge if below 52V

Technical specification	WT5100S
Operation Voltage	44.8V~ 57.5V
Dimensions	25" x 19" x 10.66"
Weight	90KG
Warranty	10 Years
LiFe Time	15 Years @ 68°F
Cycle life	6000+
Energy	51.2V 200Ah (10KWh)
Max. Charge Voltage	57.6V
Max. Charge Current	100A (2.56KW) @77°F
Max. Discharge Current	100A (5.12KW) @77°F
Energy Scalable	Max. 32 units in parallel
Enclose Protection Rate	IP22
Communication	RS232/RS485→ PC software CAN/RS485 → Inverters
Storage	Recommended stored at above 50% SOC, test @ 90 Days, recharge if below 52V

In order to prevent the battery leaking, getting hot and exploding, please pay attention to preventing measures as following:

**Warning**

- Never throw the battery into water, keep it under dry, shady and cool circumstance when not in use.
- Never confuse the positive and negative.
- Never connect the positive and negative of battery with metal.
- Never ship or store the battery together with metal
- Never knock, throw or trample the battery.
- Never cut through the battery with nail or other edge tool.

**Tips**

- Never use or keep the battery under the high temperature. Otherwise it will cause battery heat, on fire or lose some function and reduce its lifetime. The proposed temperature for long-term storage is 10-45°C.
- Never throw the battery into fire or heating machine to avoid fire, explosion and environment pollution; scrap battery should be returned to the supplier and handled by the recycle station.
- Never use the battery under strong static and strong magnetic field, otherwise it will destroy the protecting device.
- If battery leaked, the electrolyte gets into eyes, please don't knead. Flush eyes with water and go to hospital. Otherwise it will hurt eyes.
- If battery emit peculiar smell, heating, distortion or appear any unconventionality during using, storage or charging process, please take it out from device or charge and stop using.
- Never cut the battery in socket directly; please use the stated charger when charging.
- Check the voltage of battery and relevant connectors before using the battery. It can't be used until everything turns out to be normal.
- Prior to charging, fully check the insulativity, physical condition and ageing status, since breakage and ageing are never allowed; the pack voltage must not be less than the cutoff voltage, if not, it's abnormal and that battery needs to be labeled. The user should contact our Customer Service Dept and it can't be charged until repaired by our staff.
- The battery should be stored in 50% SOC. It needs to be charged once if out of use for as long as half a year.
- Clean the dirty electrode, if any, with a clean dry cloth, or poor contact or operation failure may occur